



REFURB WITH FILM

Looking for an alternative refurbishment solution?

Self-adhesive films could be a simple and cost-effective alternative for your interior design projects. Create faux finishes by wrapping existing surfaces, saving landfill and avoiding the disruption of traditional refurbishments.



STANDARD RE-FITS COST 7 TIMES MORE

NO LOSS OF REVENUE

INCREASE REVENUE FOR PREMIUM ROOMS

QUICK INSTALL WITH NO BUILDING WORK

NOT JUST FOR FLAT SURFACES

1500 REALISTIC TEXTURES AND PATTERNS

TRANSFORM ONE ITEM OR TRANSFORM MANY

A SUSTAINABLE SOLUTION

FIRE TESTED, MOISTURE AND HEAT RESISTANT

THEY SAY THAT FORM FOLLOWS FUNCTION.
WE SAY FORM PRESERVES FUNCTION.

TRANSFORMING INTERIORS

With eco-friendly materials fast becoming rising stars in the world of interiors, there are multiple benefits of using architectural films and how they can refurbish existing surfaces. Gone are the days when wrapping was exclusive to vehicles; architectural films have opened up a wealth of design possibilities.



In a world where businesses need to keep up with the latest trends, refurbishments are always high on the agenda, but contrary to popular belief, a renovation project doesn't have to break the bank.

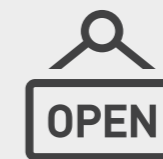
Transforming a building's interior has never been easier. From walls to partitions and even lifts, doors, columns and ceilings, thanks to architectural finishes you can wrap virtually any surface.

If you're looking for an alternative renovation solution, why not consider self-adhesive films for a simple and cost-effective resolution for interior design projects?



SUSTAINABLE SOLUTION

On average, it costs seven times more to rip out and replace interiors. Wrapping with architectural films is a novel way to upcycle existing fixtures and fittings, rather than send to landfill.



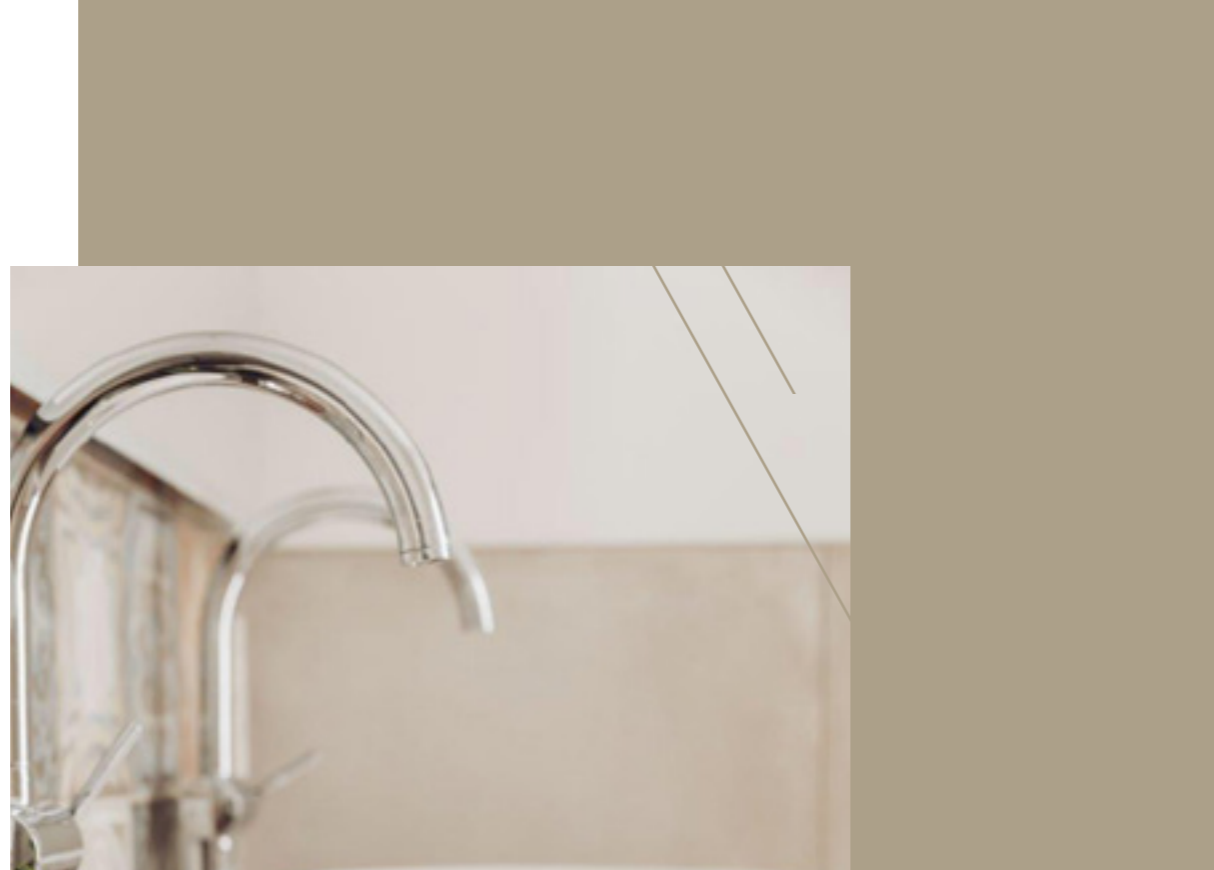
It's a budget-friendly option when costs are being squeezed, allowing businesses to refresh a venue more frequently or at a lower cost. Wrapping is also highly durable - lasting for an average of 12 years on interior surfaces - meaning it can work out more cost effective over the lifetime of the product, when compared to fabric, paint or veneer.



MINIMAL DISRUPTION

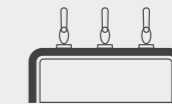
Architectural films can be applied in situ, with no noise, mess or waste. Little equipment and minimal prep is needed, meaning less downtime and inconvenience for businesses and they can stay open throughout.

The films are lightweight and conformable so they can be heated and stretched around many shapes, corners and contours without the need for edge banding.



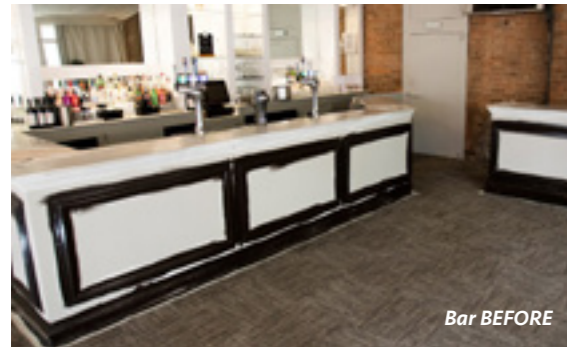
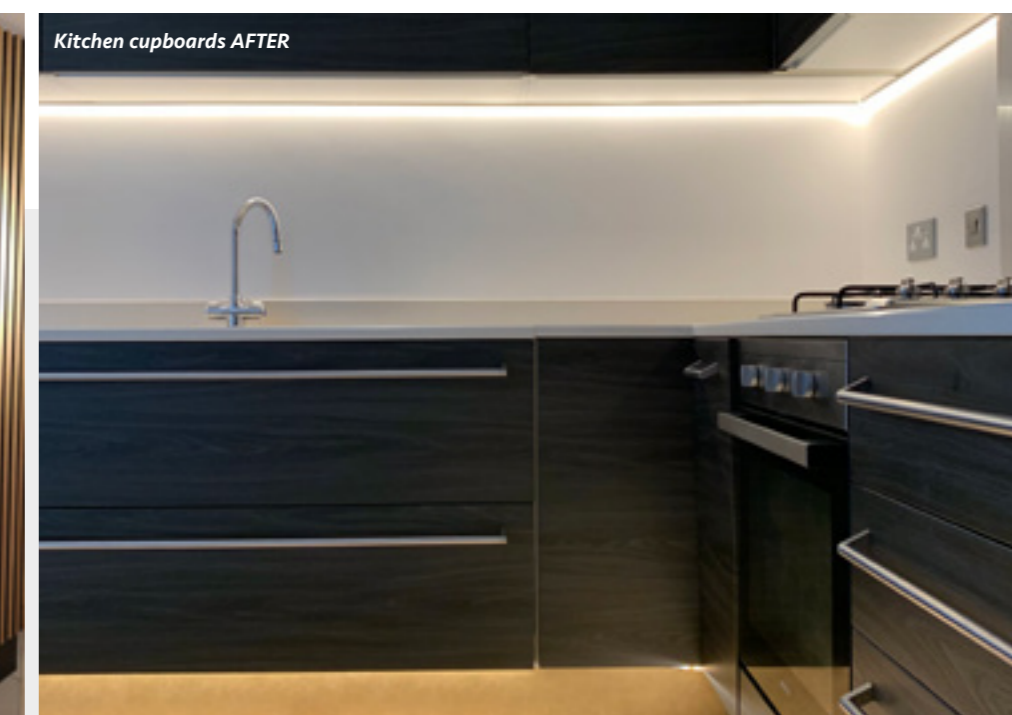
APPROVED

All finishes are fire tested and meet building regulations. And as the product is a PVC solution, it is fully water and heat resistant, as well as and hygienic, all of which are important in high-traffic venues such as gyms, bars and restaurants.



APPLICATION INSPIRATION

Here's a selection of recent transformations using self-adhesive architectural films. Wrapping existing surfaces is a cost-effective design solution for interior and exterior new building refurbishment projects, these vinyl films realistically recreate the visual effect of natural materials at a fraction of the cost.



THE BRANDS

Architectural finishes are highly engineered, durable films, designed to look and feel like real-life materials. The films are often applied with heat, by skilled installers, to provide a realistic hardwearing finish. This allows you to create bespoke designs using less expensive materials, by wrapping them to look like authentic marble, wood or concrete.

With hundreds of patterns in stock, the possibilities really are unlimited, making in-vogue design more than achievable with architectural finishes. Mimicking the aesthetics of natural materials, architectural films offer unrivalled choice of on-trend patterns and an alternative method to upcycle existing substrates in an affordable, high-quality finish.



3M DI-NOC

The extended collection offers over 1000 finishes, 3M DI-NOC is the leading brand in the architectural market. We stock the largest range of patterns in the UK, offering the most in demand popular finishes by the metre. 3M DI-NOC finishes are flexible cast PVC self-adhesive films with a Comply adhesive for easy application, meaning you are assured a premium finish for your projects.

EX: 3M DI-NOC Exterior collection can add life to tired building fronts. These durable, dimensionally stable, and weather resistant surface finishes are designed to transform the exterior of buildings. The product offers great value to both commercial and residential refurbishments, due to its minimum downtime as a result of the ease of application and no drying time, unlike paint, with the product offering a life expectancy of up to 10 years. All Exterior finishes are marked as EX in the following sections.

AR: Abrasion Resistant finishes offers increased durability for high traffic applications where more impact resistance is needed. Matching the standard finishes, you can identify these by the AR in the product code.

MT: 3M's new ultra matt films, featuring a unique topcoat that has been developed to provide fingerprint and dirt resistance. The coating on the film also enables an even smoother finish and texture to the surface, due to the specular reflection. Available on a wide selection of woods, stone, textile and single colour patterns to create unrivalled interior designs with film. All finishes containing MT codes belong to this collection.



COVER STYL'

As the fastest growing brand of architectural film, Cover Styl' films are available in hundreds of colours and finishes. Used widely throughout Europe, this emerging brand is a fantastic option where budgets are tight as a great value engineering proposition for refurbishments.

The range is polymeric calendered, with a durability of up to 10 years for indoor applications. Available in a huge range of finishes including wood grains, marble, leather, super matt, glitter, fabric, colours and stone.

WOOD FINISHES



Performance varies dependent upon individual pattern construction. Please cross reference the symbols below each finish for application considerations.



Suitable for external application



Not recommended for use on compound curves / stretching



Overlaps only. Not recommended for splice / butt joint applications

WOOD FINISHES

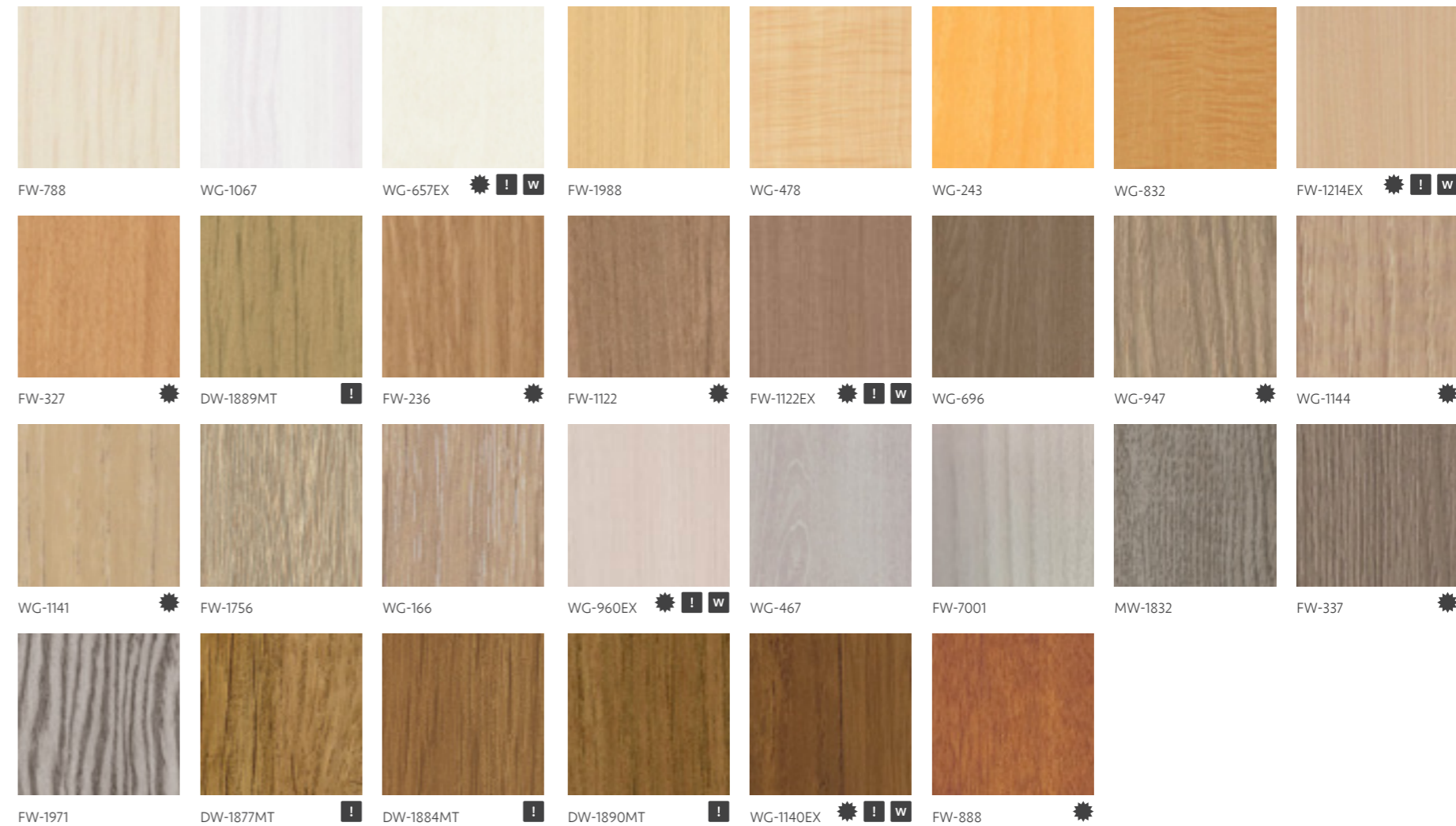


 AC02 	 AL29 	 NE63 	 J17 	 J14 	 I9 	 B50 	 NE61 
 AG04 	 AG20 	 CT17 	 H10 	 H50 	 I16 	 B6 	 AZ07 
 NE57 	 B5 	 AG14 	 AL24 	 AF03 	 AL34 	 AL14 	 B8 
 NE13 	 AF08 	 NE68 	 B4 	 H6 	 H7 	 H8 	 I14 
 B3 	 I13 	 G0 	 F5 	 F4 	 B1 	 H4 	 I11 

WOOD FINISHES



WOOD FINISHES

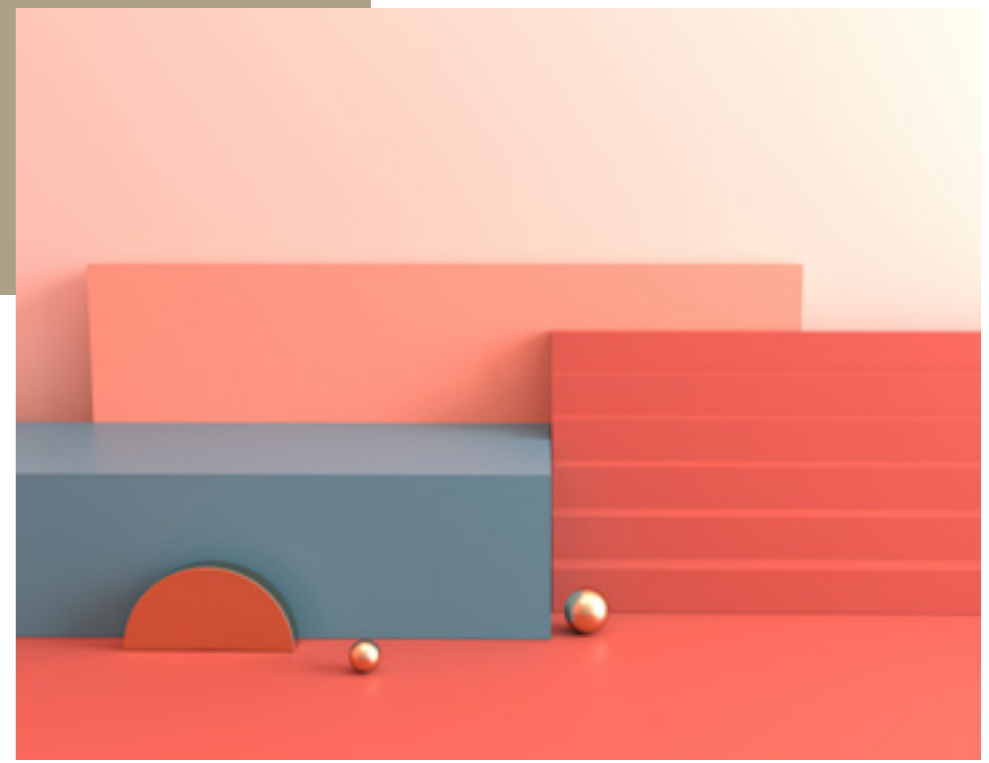


WOOD FINISHES



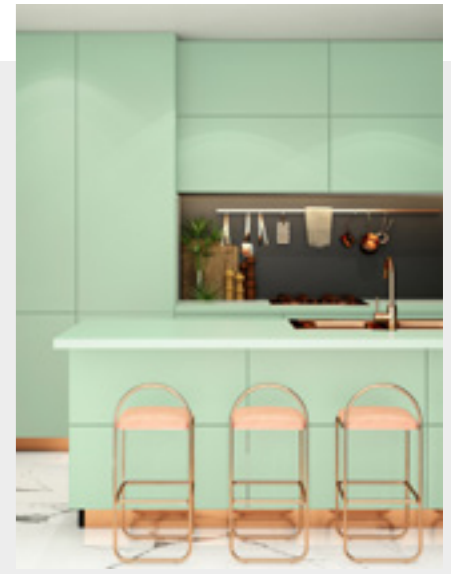
FW-886	WG-943	FW-233EX	FW-1768	DW-1885MT	DW-1882MT	FW-1022	FW-1021
FW-650	MW-1420	WG-156	FW-651	FW-330	FW-1135	FW-625EX	FW-1757
FW-618EX	FW-1127	WG-664					

COLOUR FINISHES

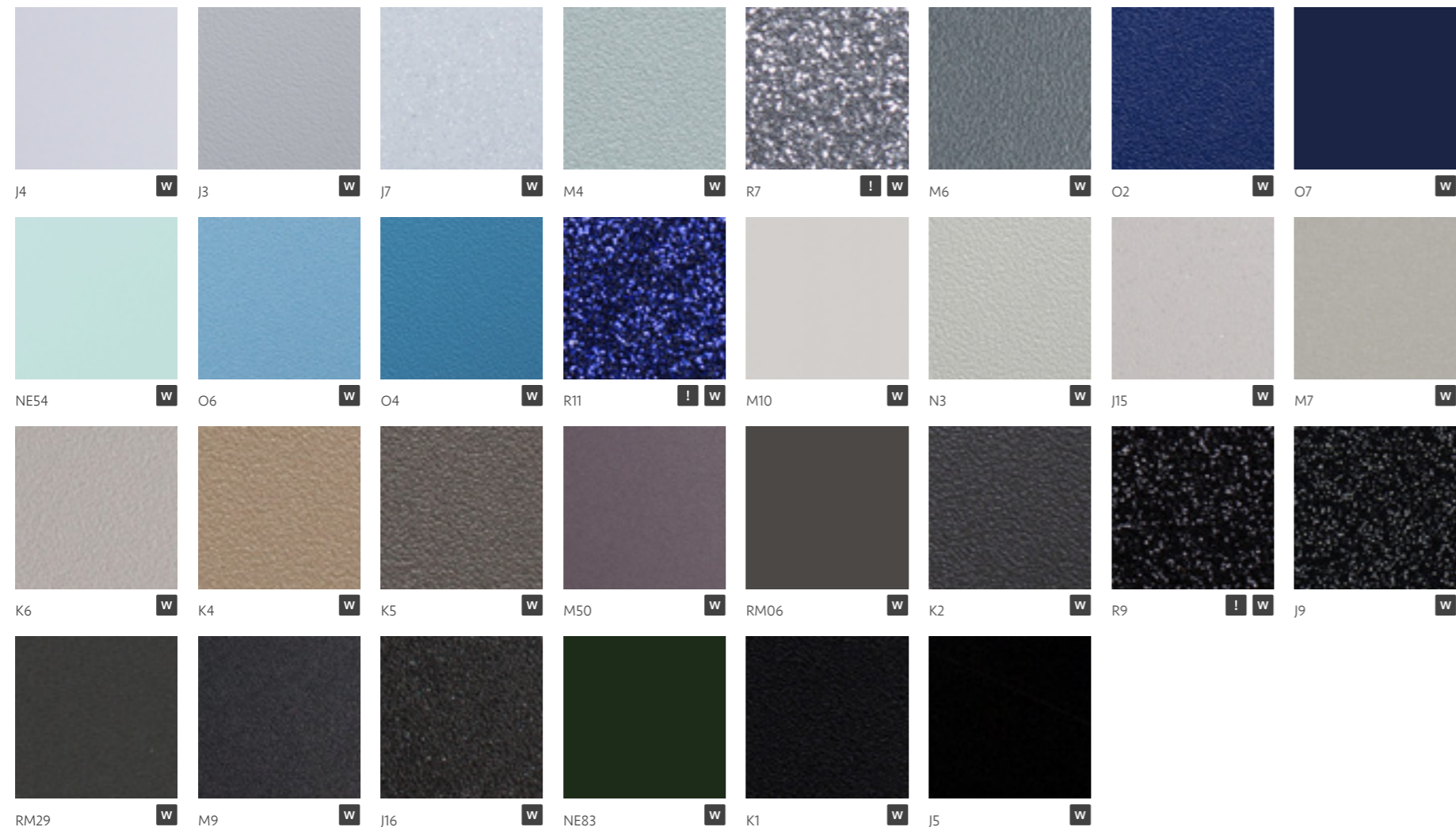


Performance varies dependent upon individual pattern construction. Please cross reference the symbols below each finish for application considerations.

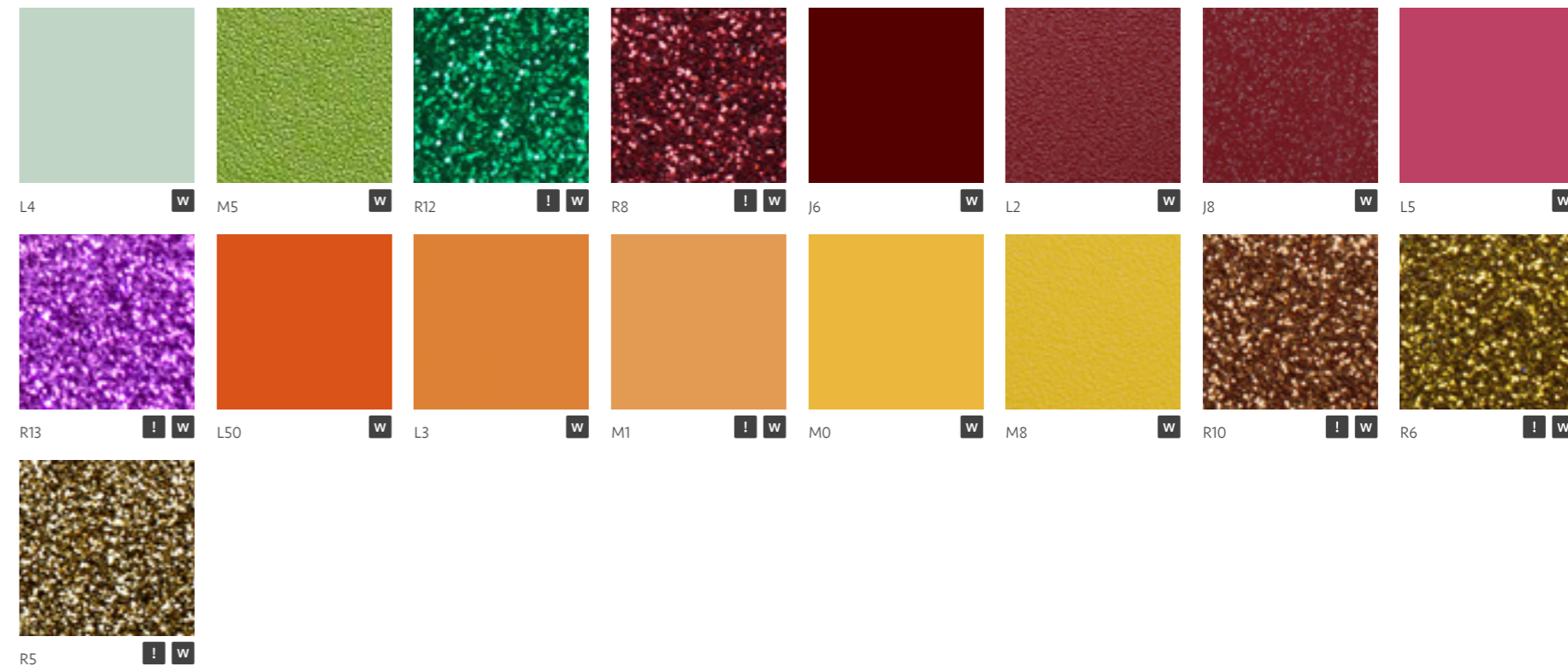
- Suitable for external application
- Not recommended for use on compound curves / stretching
- Overlaps only. Not recommended for splice / butt joint applications



COLOUR FINISHES



COLOUR FINISHES



COLOUR FINISHES



PWF-500	WH-111	PS-983	PS-090EX	PS-091	PS-022	PS-1866MT	PS-034	
PS-1187	PS-959	PS-959EX	PS-957EX	PS-976EX	PS-503	PS-955	PS-954	
PS-971	PS-952	PS-950	PS-1869MT	PS-949	PS-992	PS-504	PS-1870MT	
PS-910	PS-140							

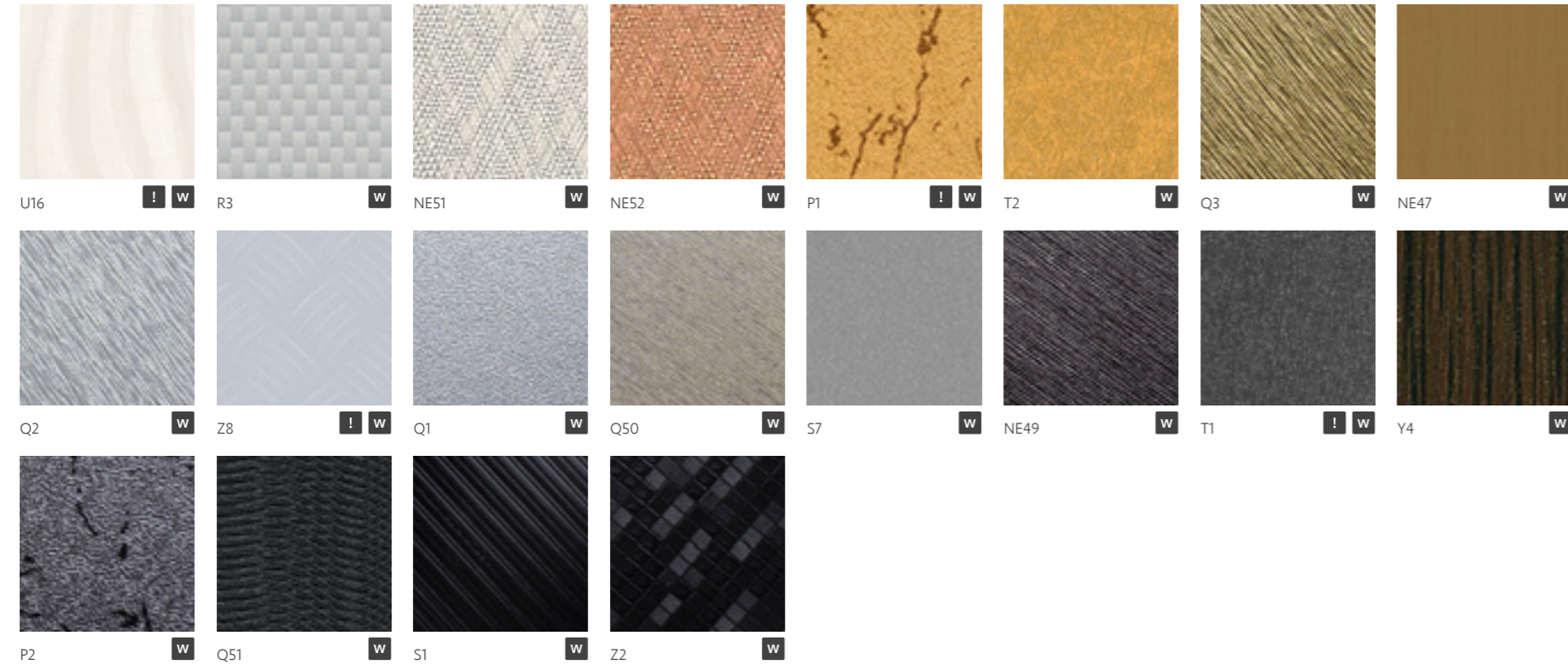
METALLIC FINISHES



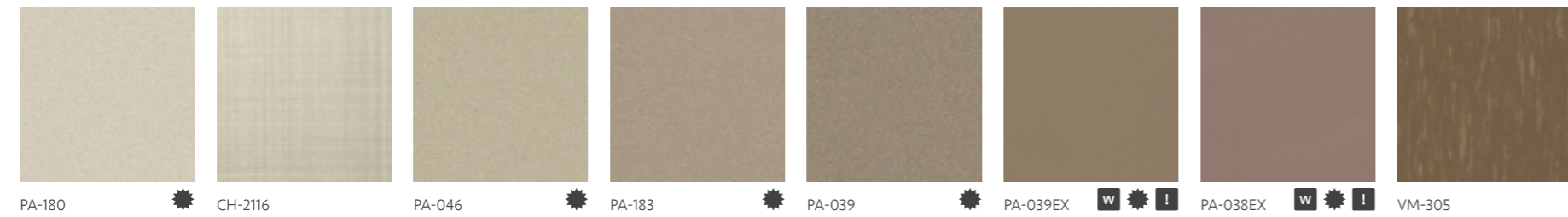
Performance varies dependent upon individual pattern construction. Please cross reference the symbols below each finish for application considerations.

- Suitable for external application
- Not recommended for use on compound curves / stretching
- Overlaps only. Not recommended for splice / butt joint applications

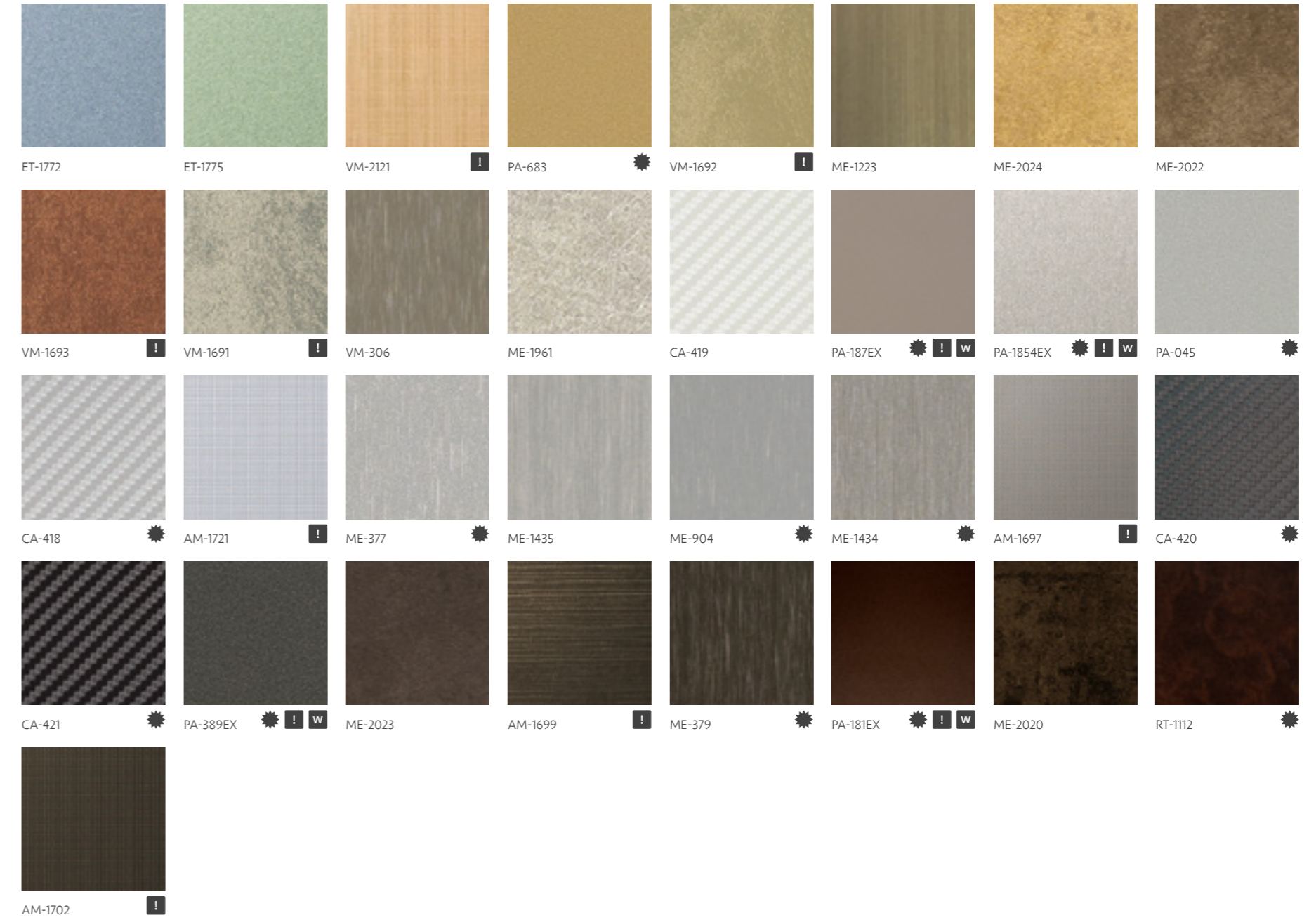
METALLIC FINISHES



METALLIC FINISHES



METALLIC FINISHES



STONE FINISHES



Performance varies dependent upon individual pattern construction. Please cross reference the symbols below each finish for application considerations.



Suitable for external application

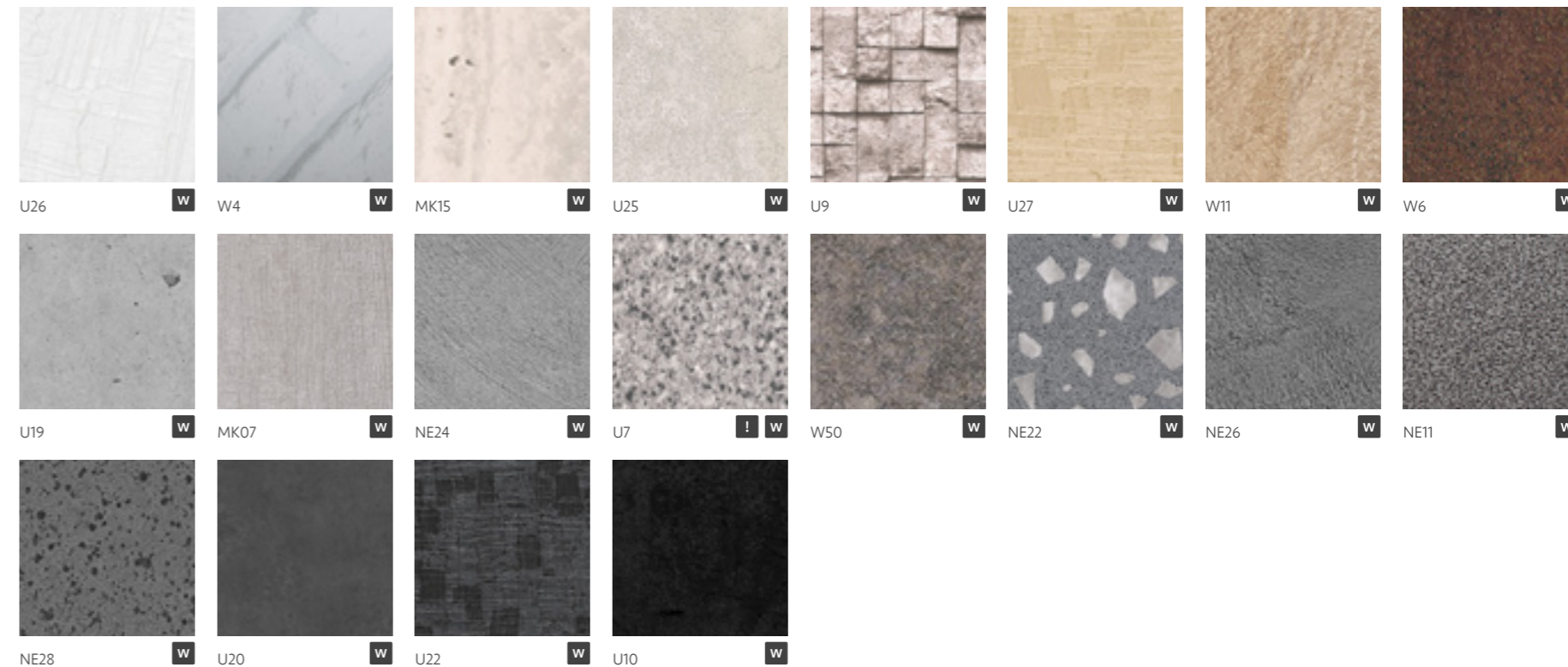


Not recommended for use on compound curves / stretching

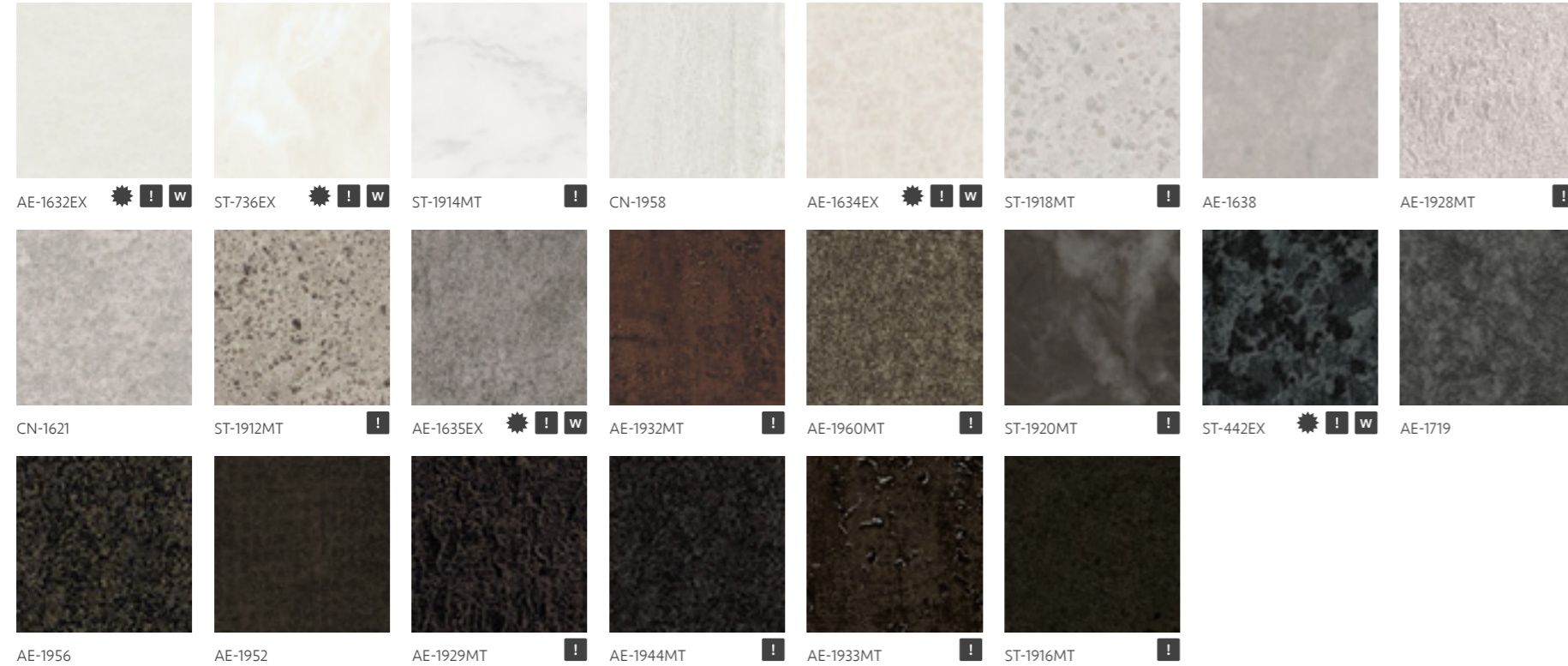


Overlaps only. Not recommended for splice / butt joint applications

STONE FINISHES



STONE FINISHES

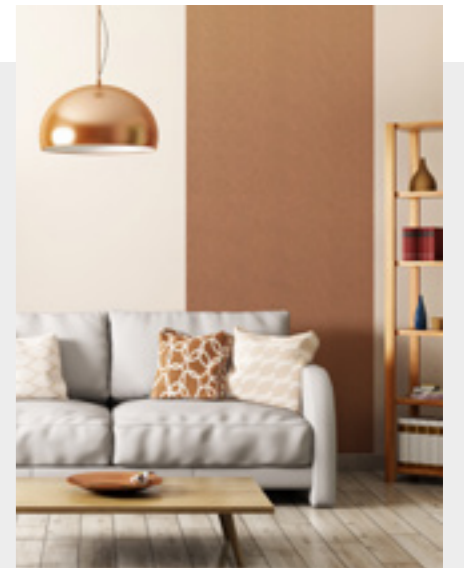


FABRIC FINISHES



Performance varies dependent upon individual pattern construction. Please cross reference the symbols below each finish for application considerations.

- Suitable for external application
- Not recommended for use on compound curves / stretching
- Overlaps only. Not recommended for splice / butt joint applications



FABRIC FINISHES

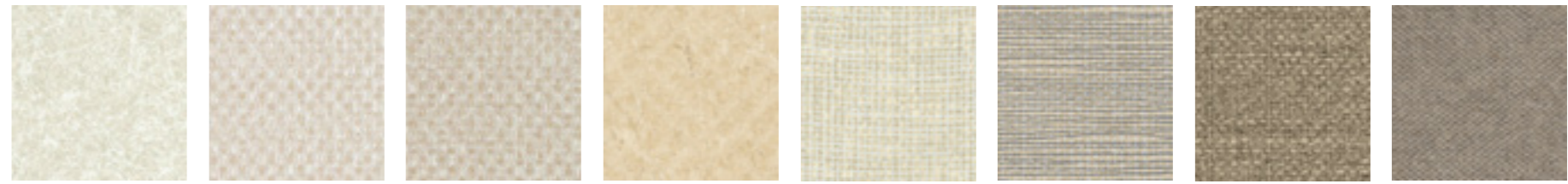


U12 ! W MK18 W NE37 W NE38 W T10 W NE20 W MK21 W NE33 W

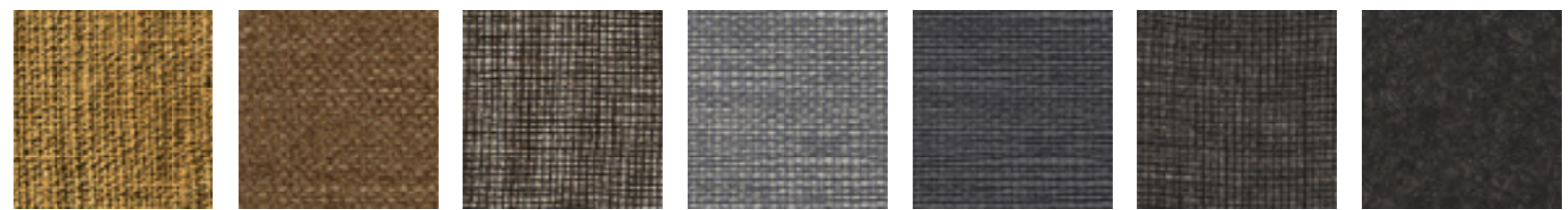


T12 W T51 W AL09 W W2 W T8 ! W T7 ! W T9 ! W

FABRIC FINISHES



FE-1966 FE-805 ! FE-813 ! FE-1732 NU-2008 NU-1788 ! NU-1937MT ! NU-1935MT !






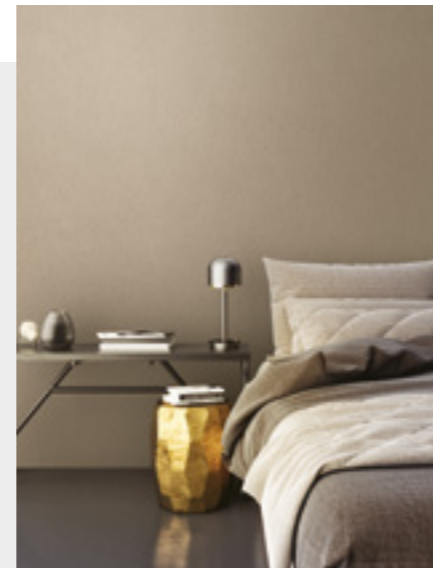
NU-2005 NU-1936MT ! NU-2001 NU-1786 ! NU-1787 ! NU-2009 FE-1967

LEATHER FINISHES



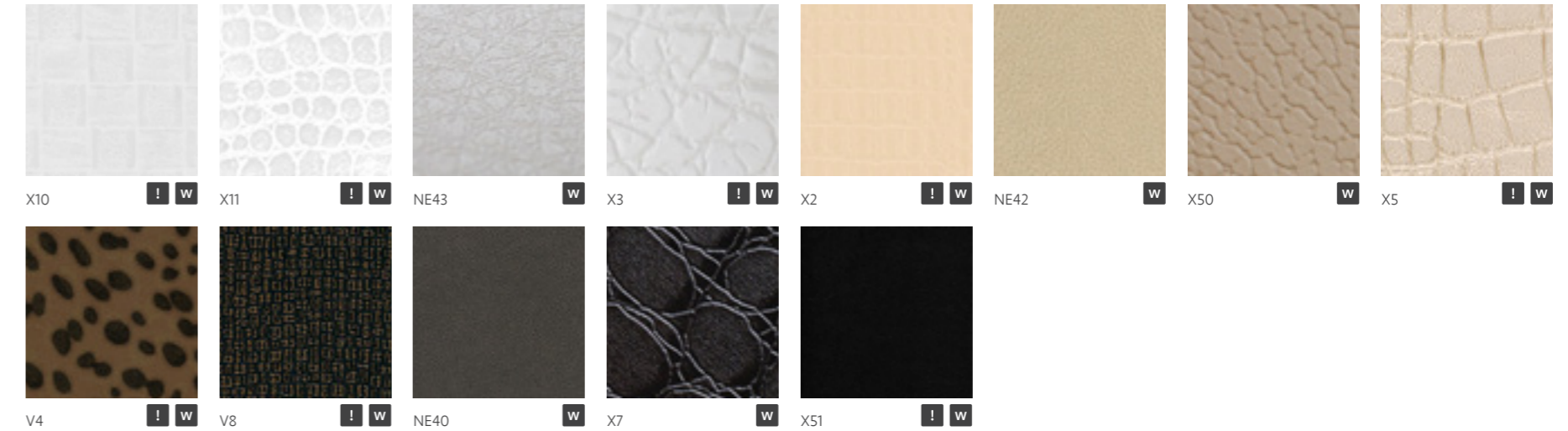
Performance varies dependent upon individual pattern construction. Please cross reference the symbols below each finish for application considerations.

-  Suitable for external application
-  Not recommended for use on compound curves / stretching
-  Overlaps only. Not recommended for splice / butt joint applications



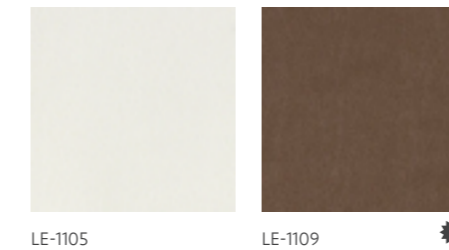
LEATHER FINISHES

COVER STYL'



LEATHER FINISHES

3M



TECHNICAL SPECIFICATIONS

The use of architectural film has become more prevalent over the last few years as there has been a shift in attitude toward using sustainable solutions and methods within the construction sector.

Wrapping doors or case goods instead of ripping out and sending to landfill is a powerful statement for any stakeholders within a refurbishment scheme.

Ensure you have discussed all the technical considerations for your project with your installer. Documentation can be provided for better peace of mind.



DURABILITY

Due to the number of finishes available, durability varies between patterns and brands. Cover Styl' finishes typically last 10 years, standard 3M DI-NOC has a durability of 5 years for exterior applications but up to 12 years for indoor use. The specialist exterior range however is expected to last 10 years+ ensuring protection against defects in fading, peeling, discoloration or loss of adhesion.

ABRASION RESISTANCE

Superior to many common wall surfaces such as paint/wallpaper, an equivalent level of HPL. There are additional specialist ranges also available for high traffic areas, or where greater protection is sought.

IMPACT RESISTANCE

Performance is superior to many common wall surfaces such as paint/wallpaper. However, film surfaces can be dented if sufficient force is applied. Impact resistance is highly dependent on the strength of the substrate material onto which it is applied. As it is a vinyl, it offers a degree of cushioning on impact, where harder substrates such as laminates may crack with the same impact. However, the beauty of architectural film, is that any damage over its lifetime can be repaired with an invisible patch, without having to remove or replace any expensive panels.

CLEANING

Architectural films are made from durable PVC, meaning they are wipeable and practical. They are also resistant to staining by common substances e.g. food or household cleaners. Full technical spec sheets are available on request.

FIRE CERTIFICATION

Architectural films meet all building and IMO regulations with fire certifications available across the range. Should you require specific information by patterns, we can put you in touch with our technical department. Fire test results vary by finish and application substrate, with most classified as class B or C with low dripping and emissions.



